

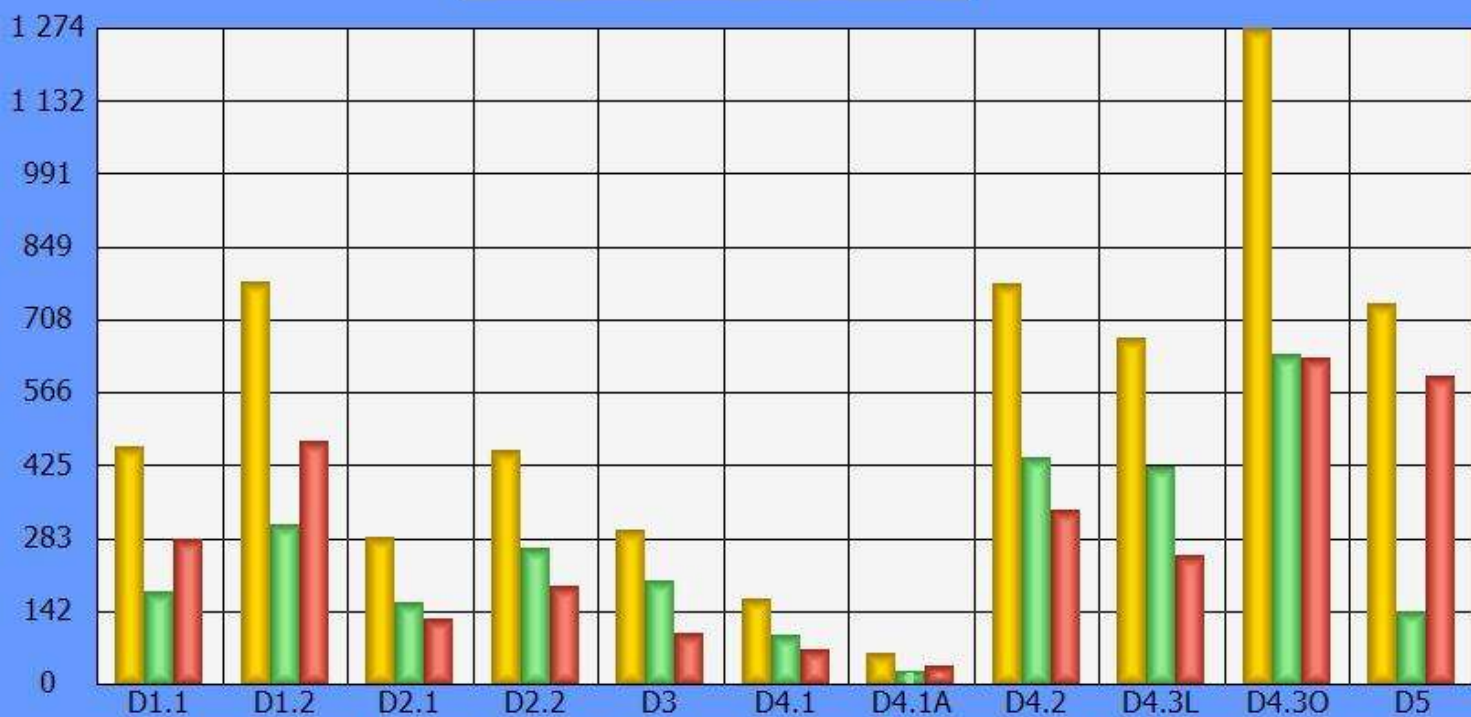
Análise de Predios Instalados por Bloco Referente ao Ano 2023

Bloco	T.Predios	%	T.Area	%	P.Activos	%	A.Activa	%	P.Inactivos	%	A.Inactiva	%
D1.1	461	7.73	857.95	9.10	181	39.26	568.06	66.21	280	60.74	289.89	33.79
D1.2	780	13.08	677.64	7.19	308	39.49	478.79	70.66	472	60.51	198.85	29.34
D2.1	286	4.79	1 015.05	10.76	158	55.24	820.63	80.85	128	44.76	194.42	19.15
D2.2	453	7.59	982.73	10.42	263	58.06	647.18	65.86	190	41.94	335.55	34.14
D3	299	5.01	794.82	8.43	202	67.56	642.50	80.84	97	32.44	152.31	19.16
D4.1	164	2.75	608.15	6.45	96	58.54	496.71	81.68	68	41.46	111.43	18.32
D4.1A	60	1.01	172.32	1.83	24	40.00	89.88	52.16	36	60.00	82.44	47.84
D4.2	778	13.04	1 252.72	13.28	440	56.56	955.99	76.31	338	43.44	296.73	23.69
D4.3L	672	11.27	1 190.40	12.62	421	62.65	892.37	74.96	251	37.35	298.03	25.04
D4.30	1 274	21.36	1 613.59	17.11	640	50.24	1 059.71	65.67	634	49.76	553.88	34.33
D5	738	12.37	264.88	2.81	141	19.11	142.42	53.77	597	80.89	122.45	46.23
11	5 965	100	9 430.22	100	2 874	48.18	6 794.24	72.05	3 091	51.82	2 635.98	27.95

A.B.P.R.S.A. - ABGEST 23.02

Análise Numérica de Predios por Bloco Referente ao Ano 2023

■ Total
 ■ Activos
 ■ Inactivos



Associação de Beneficiários do Plano de Rega do Sotavento do Algarve

Data : 30-01-2024